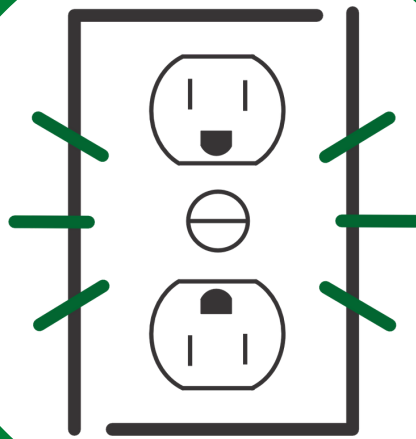


# power partner

*connecting you with the things you love*

*Electrical Consultants & Contractors*



# About us

We are a team of industry specialists within a privately owned company, effectively serving your problems like a partner. We understand your project needs and tailor our business and supply solutions to meet them.

**Safer**

**Better**

**Smarter**

**Power Partner believes that the most profitable relationships are based on mutual understanding, knowledge of our customer requirements and a fantastic customer service to ensure those requirements are met.**

**As such we work with our customers to:**

- Introduce new and innovative products and services
- Aid in product solutions through our team of experts
- Address commercial challenges through supplier contract negotiations
- Rationalize customer product portfolios to ensure they are able to maximize cost efficiencies through quantity purchasing
- Identify and source obsolete and unusual items
- Offer a flexible service to ensure our customers delivery expectations are met – however demanding they may be
- Competitively price our products and services, gaining supported manufacturer deals in partnership with our clients
- Use KPI's and accurate reporting systems to ensure on-going continuous improvement

# Company Profile



Power Partner, a new generation control panel integrator, provides solution for integrated power, instrumentation and control system. Driven by an inherited value systems comprising of quality, environment and safety standards Power Partner has moved a head and continues to do so.

## Vision

Today, globalization have open avenues to newer markets in India and abroad with the presence of international players in India, Power Partner embarked on the mission of building a state of art of panel manufacturing and panel integration facility meeting global standards and offers uncompromised integration services in true sense. Power Partner has partnered with many of the major OEM manufacturers of instrumentation and Power components to offer best services.



# Our Market Sectors



**Oil Gas &  
Petrochemical**



**Commercial/ Real Estate/  
Hotel Industries/ Institutions**



**Pharmaceutical &  
Healthcare**



**All Kind of Manufacturing  
& Process Industries**



**Marine**



**Nuclear**



**The One Stop Shop for Renewable  
Energy**

# Service Excellence

**Industry Experts** –  
Information you can trust  
and rely on.



**Can Do Attitude** –  
Providing innovative supply  
solutions and service



**Employing talented people**  
– Serving your needs  
effectively  
reducing transactional  
costs



**Extensive training** -  
Sharing our Industry  
specific knowledge and  
expertise



**Empowering our team** –  
Dedicated contacts  
empowered to help at each  
stage of your project



**Retaining our team** –  
Consistent Service with  
latest Technology.



# Our Products

## Control Panels

- PCC - Power Control Centre
- MCC - Motor Control Centre
- Intelligent Motor Control Centre
- AMF – Auto Mains Failure Panels
- Auto Synchronization Panels for DG
- Change Over Panels
- APFC – Automatic Power Factor Control Panels
- Control & Relay Panels
- Feeder Pillars
- VCB Panels – 11KV /33 KV
- Compact Sub-Station
- PLC Based Automation Panels
- Servo Control Systems
- AC Variable Frequency Drive Panels
- Soft Starter Panels
- Instrumentation Panels
- LT Switchgear Panels
- ACDB Panels
- DCDB

## Bus Duct

- 415V Non Segregated Phase
- Sandwich Bus Bar trunking with Aluminum/Copper Conductor
- Compact Air Insulating Bus Trunking System

---

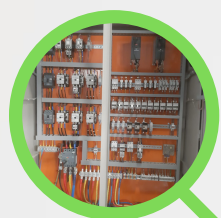
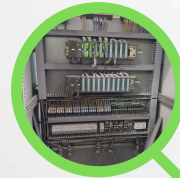
## TURNKEY PROJECTS & SERVICES

---

Complete Erection, Commissioning & Testing on Turnkey basis for all Electrical Works as listed below:

- 33/11 KV Cable Laying
- 33/11KV VCB,RMU
- 33/11KV Transformer
- Diesel Generators
- Lighting Arrestors
- Earthing
- LT Cable Laying
- LT Panels
- Security – Camera/CC TV
- Fire Fighting
- Factory Shed & Building Lighting

# Art Of Manufacturing



# power partner

*connecting you with the things you love*

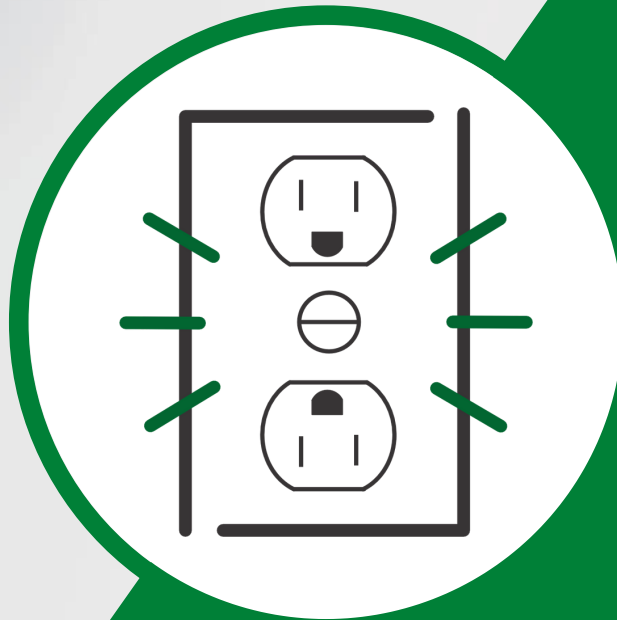
*Electrical Consultants & Contractors*

Office: Basni, Industrial Area, Jodhpur

TEL: +91 9983522260

Email: [info@powerpartner.co.in](mailto:info@powerpartner.co.in)

Visit us: [powerpartner.co.in](http://powerpartner.co.in)



Follow Us at:

